

EMERGENCY ORGANIZATION OR EMERGENCY RESPONSE TEAM OF FIRE PERIL

Emergency Organization Plan or Emergency Response Team Plan (ERT) is to ensure that when an emergency occurs for whatever reasons employees should be able to react and assume role accordingly as part of their working routine. It can minimize the impact of the emergency to property loss and business interruption. The following positions and functions of ERT will be described as below (see figure. 1):

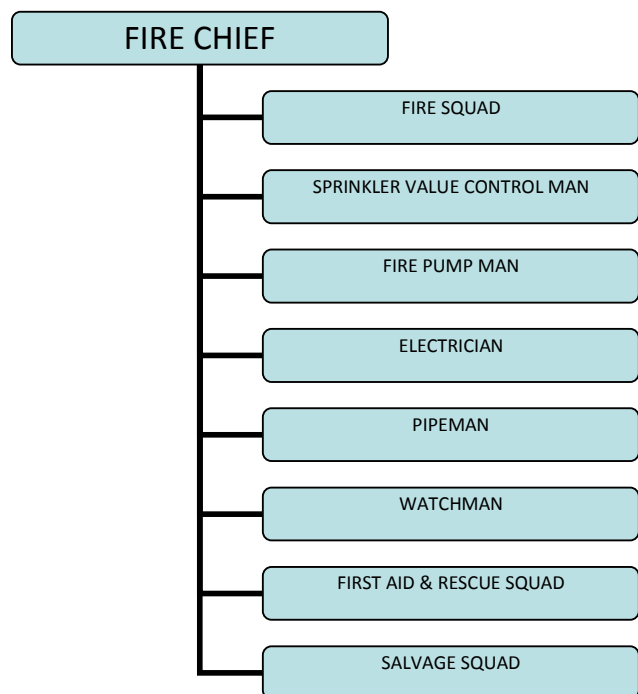
- a. Fire chief
Fire chief should have full authority during an emergency. He should also possess the following qualifications and responsibilities.
 - a.1. sufficient training in fire fighting.
 - a.2. familiar with every part of the plant with existing and potential hazard and fire protection.
 - a.3. deciding precisely when to shut off sprinkler (if available sprinkler).
 - a.4. ensuring that there are sufficient men assigned to the PEO for all emergency action functions and for each shift.
 - a.5. an ability to work effectively with the people under his supervision.
 - a.6. appointing an assistant for each shift (usually member from the fire squad) to take over his function when he is absent, to ensure that his assistant is just as well trained to take complete charge.
- b. Fire squad (fire brigade)
Fire squads are trained to know:
 - b.1. How to turn on an alarm.
 - b.2. How to combat fire in detached unsprinklered buildings of combustible construction or occupancy, in yard storage or on roof by using two large hose streams properly and promptly. This generally requires a unit of six men.
 - b.3. Which type of extinguisher to use for a particular fire, where to find, and how to use it.
 - b.4. How to operate fire extinguishing systems to protect particular hazards.
- c. Sprinkler valve control man (if available sprinkler)
Sprinkler Valve Control Man has one of the most important functions. Without the Sprinkler Valves open, the plant will have no sprinkler protection, the main line of the fire defence. Thus, he should be thoroughly familiar with the location and operation of all sprinkler valves. When the alarm sounds, the Sprinkler Valve Control Man will:
 - c.1. Go to the sprinkler valve for the fire area.
 - c.2. Make sure sprinkler valve is open and physically testing it.
 - c.3. Stand guard to prevent anyone from shutting off the water.
 - c.4. Close the valve only when ordered to do so by the Fire Chief.
 - c.5. Keep alert to re-open it promptly if there is any signs of the fire starting up again.
 - c.6. Stay at the valve throughout the fire and afterwards until the open sprinklers are replaced and protection is restored.
- d. Fire pump man (if available fire pump)
Fire Pump man/Operator's immediate duty when the plant alarm sounds is to:
 - d.1. Start manually operated pumps or to check automatic starting pumps.
 - d.2. Keep them operating until instructed to shut them down.
- e. Electrician
The duties of an electrical:
 - e.1. Shutting down equipment such as fans and ventilating equipment.
 - e.2. Fixing temporary electrical connection for emergency lighting and similar contingencies as and when needed.
 - e.3. Making sure the damaged circuits are de-energised after the fire so that clean-up can proceed under safe conditions.

EMERGENCY ORGANIZATION OR EMERGENCY RESPONSE TEAM OF FIRE PERIL

- f. Pipeman
Being familiar with plant utility piping systems, he should make sure when the fire alarm bell is sounded;
- f.1. Those flammable-gas and flammable-liquid systems in the fire area have been shut off.
 - f.2. That steam and other lines, which might interfere with fire fighting, are closed.
 - f.3. All piping situations that will affect the safety of the plant and the efficiency of emergency operations are taken care.
 - f.4. That all fused or weakened sprinklers are replaced so that sprinkler protection can be restored promptly.
- g. Watchman
In the event of fire occurring during idle hours, he should initiate the following:
- g.1. Call the Fire Department even if the alarm is a remote signalling system.
 - g.2. Notify the Fire Chief and other members of the ERT.
 - g.3. Make sure that the sprinkler valves are open. If there is a fire pump, confirm that it is operating.
 - g.4. Attack the fire only if it is small and can be put out with the fire extinguishers.
 - g.5. Be at the plant entrance and direct the firemen on their arrival to the location of the fire.
 - g.6. After the arrival of help, he must ensure that the plant is not accessible to unauthorised persons and to help control the public from obstructing the fire operations.
- h. First aid and rescue squad
The Rescue Squad is needed particularly in rural locations or in plants, which have hazards likely to result in explosions or flash fires. They should be trained in first aid basics in order to render help to injured-personnel and to arrange for the ambulance it is deemed necessary.

- i. Salvage squad
Salvage squad gets the facility back in operation as soon as possible after an emergency. The duties include the following, when they have been deemed safe to perform.
- During emergency:
- Spread waterproof covers over machinery and stocks to protect against possible water damage.
 - Move expensive or vital equipment and stock.
- After emergency:
- Start salvage without delay.
 - Restore fire protection at once eg. replace opened sprinkler head, repair broken piping, etc.
 - Remove and separate damaged stocks.
 - Wipe and oil machinery at once to prevent rusting and dry out motors and other electrical apparatus.

Figure. 1. Emergency Organization/structure



Reference:

- [1] Safety Guidelines 2006-Emergency Organization
- [2] FM Data Sheet-Emergency Response
- [3] NFPA 600-Industrial Fire Brigades

Disclaimer

This article has been compiled in good faith to the best of our knowledge and ability for the purpose of risk management interest. However, Global Intrima, PT hereby disclaims any responsibility whatsoever for any error or omission contained herein or for any damage or liability howsoever caused, arising from the use of this article of the information it contains by any party whatsoever.